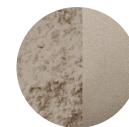


PRODUCT SPECIFICATIONS*

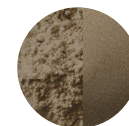
Material	Powdercoated Aluminium
Size	Large: Ø800 x 550 mm - 2'7,5" x 1'9,7" Extra Large: Ø1000 x 650 mm - 3'3,4" x 2'1,6"
Weight	Large: 23,5 KG - 51,8 lbs Extra Large: 32,5 KG - 71,7 lbs
Power consumption	max. 150 W
Voltage	100-240 VAC - 50Hz
Connection	Hardwired, G3x1 mm ² type H05RN-F recommended
Light source	Custommade LED, 14,4W/m, 140LED/m, 2700K, 24VDC CRI>85, Beam Angle 270°
Classification	Ingress protection IP65 (LED) CE Marking, EMC, LVD All components are CE and uL certified**
Maintenance	Maintenance free , wipe fresh stains with a damp cloth
Warranty	Extended warranty of 5 year after registration

* custom solutions on request, ask us about it!

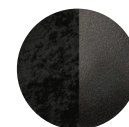
FINISHES



LIGHT GREY
C31



BRONZE
C33



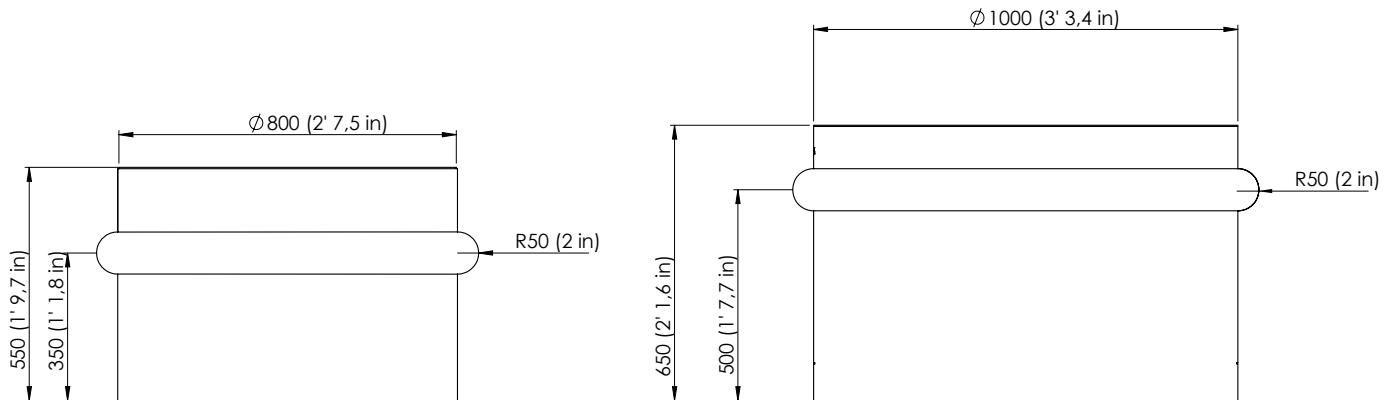
BL/ BROWN
C34



IVORY
RAL 1013 HR



CUSTOM
RAL



DRIVER SPECIFICATIONS*

Specifications	WiFi + Bluetooth + 2.4G wireless transmission technology, low power consumption
Dimmer	Fully Dimmable, control brightness/saturation
Classification	Ingress protection IP67 (DRIVER), CE Marking, EMC, LVD All components are CE and uL certified*
Control	App Remote Control (sold separately) Hardwired on existing system
Safety	The driver needs to be connected with waterproof connectors and provided with a reliable grounding

* custom solutions on request, ask us about it!

COMPATIBLE WITH



Amazon
Alexa



Tuya
Smart Home



Google
Home



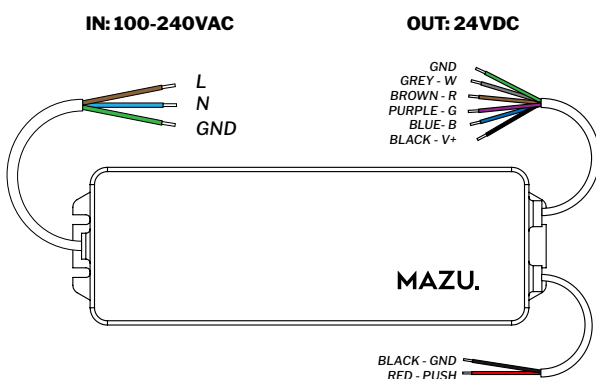
Casambi
Custom solutions



DALI
Custom solutions



Custom
solutions



W: www.thisismazu.com
E: info@thisismazu.com
T: +32 3 846 6000