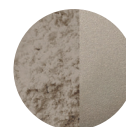


## PRODUCT SPECIFICATIONS\*

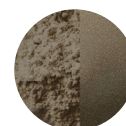
Material	Powdercoated Aluminium
Size	Medium: Ø620 x 450 MM Large: Ø880 x 550 MM Extra Large: Ø1100 x 650 MM
Weight	Medium: 13.5 KG Large: 23 KG Extra Large: 33.5 KG
Power consumption	max. 150 W
Voltage	100-240 VAC - 50Hz
Connection	Hardwired, G3x1 mm <sup>2</sup> type H05RN-F recommended
Light source	Custommade LED, 14,4W/m, 140LED/m, 2700K, 24VDC CRI>85, Beam Angle 270°
Classification	Ingress protection IP65 (LED) CE Marking, EMC, LVD All components are CE and uL certified*
Maintenance	Maintenance free , wipe fresh stains with a damp cloth
Warranty	Extended warranty of 5 year after registration

\* custom solutions on request, ask us about it!

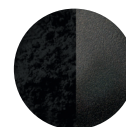
## FINISHES



LIGHT GREY  
C31



BRONZE  
C33



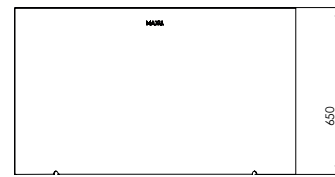
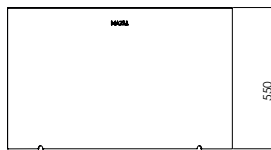
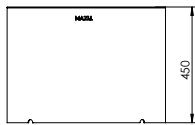
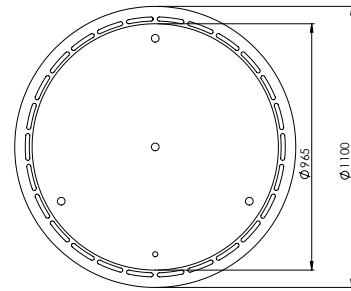
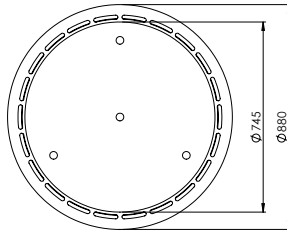
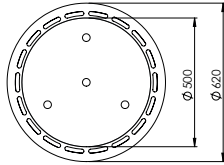
BL/ BROWN  
C34



IVORY  
RAL 1013 HR



CUSTOM  
RAL



## DRIVER SPECIFICATIONS\*

Specifications	WiFi + Bluetooth + 2.4G wireless transmission technology, low power consumption
Dimmer	Fully Dimmable, control brightness/saturation
Classification	Ingress protection IP67 (DRIVER), CE Marking, EMC, LVD All components are CE and uL certified*
Control	App Remote Control (sold separatly) Hardwired on existing system
Safety	The driver needs to be connected with waterproof connectors and provided with a reliable grounding

\* custom solutions on request, ask us about it!

## COMPATIBLE WITH



Amazon  
Alexa



Tuya  
Smart Home



Google  
Home



Casambi  
Custom solutions



DALI  
Custom solutions



Custom  
solutions

